

Your vision for quality.

# EyeC ProofRunner



# The company

EyeC is a leading vision technology company based in Hamburg, Germany. We are focused exclusively on high performance artwork and print inspection systems aimed to assure the highest quality standard throughout the design and printing process.

Our R&D and Customer Support staff consists of highly skilled and experienced engineers, graduated in either Electronic Engineering and/or Computer Technology with long experience in industrial inspection applications.

Our products are based on the latest pattern recognition technology and are designed to meet the needs of design houses, the printing industry, and their customers. They have been developed in close cooperation with actual

users, with a strong emphasis on speed, reliability, and ease of use. Our software is produced in conformance to applicable ISO 9001, GMP and GAMP 5 guidelines, and contains all functions necessary for validation according to the guidelines laid out in U.S. FDA Title 21 CFR Part 11.

EyeC systems are in use at numerous customers in the printing, pharma, cosmetic and other industries across the world, producing offset printed inserts, folding cartons and flexographic self-adhesive labels for food, cosmetic, medical and pharmaceutical applications.



## The EyeC History

- 2003** EyeC Profiler 400 for off-line inspection
- 2004** EyeC Profiler 600 for labels and EyeC Profiler 1000 for cartons
- 2005** EyeC Profiler Braille, EyeC Profiler 700 for patient information leaflets, barcode inspection
- 2006** EyeC ProofRunner for in-line inspection
- 2007** Cigarette warning text control tool and color distance tool
- 2008** RSS and Data Matrix Code Inspection, EyeC ProofRoller for cylindrical objects
- 2009** EyeC ProofRunner Carton, EyeC ProofRunner Folder Gluer and EyeC ProofRunner Variable Data

- 2010** EyeC Profiler Graphic Multiuser
- 2011** EyeC ProofBook for multi-page PDFs, In-line inspection of foils and patient information leaflets
- 2012** In-line inspection of sheet for offset machines, In-line color control
- 2013** EyeC Profiler Content for the inspection of texts, graphics and layout
- 2014** EyeC ProofRunner Carton Retrofit
- 2015** Braille inspection for A2 scanners, EyeC ProofRunner Sheetfed as retrofit module
- 2016** EyeC ProofRunner Carton HiLight and EyeC ProofRunner Carton Pre-Feeder

# EyeC ProofRunner

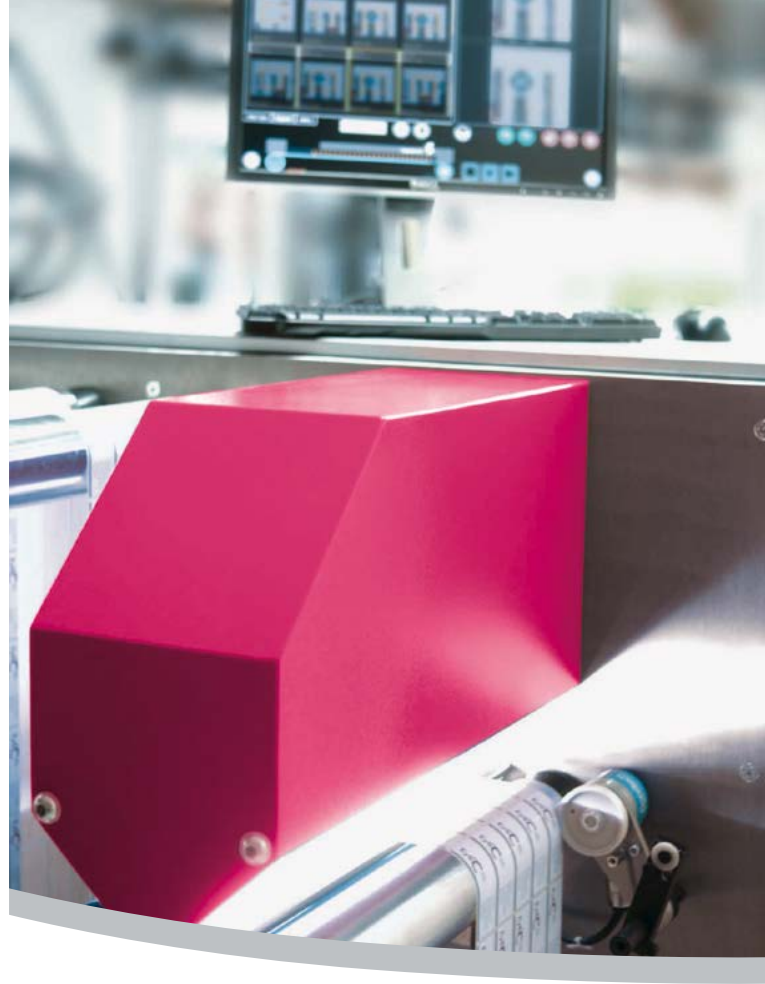
## 100% verification - print and content

Finally there is an easy way to check all your prints against your customer proof! With an EyeC ProofRunner you get automatic 100% inspection of all items across the web, content verification against your customer proof as well as the best mix-up prevention you can imagine - right on the press or on a rewinder. The process is simple and yields accurate results; so you can rest assured that you will print exactly what your customer expects. Inspection results are instantly available and can be used for immediate corrective action. This gives you the means to completely control and monitor your printing process and to avoid scrap. In short: 100% inspected, 100% content verified and 100% compared to the customer proof!

### Easy to use

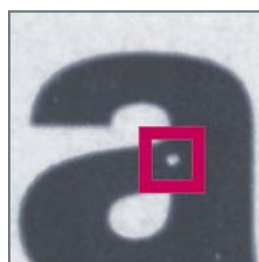
The EyeC ProofRunner has been designed with ease of use in mind. Any print machine operator can perform a meaningful in-line inspection within minutes.

- **The customer proof is loaded automatically based on the entered job data.**
- **All items across the web are automatically identified.**
- **Irrelevant areas are automatically disregarded**
- **Significant deviations are brought to the operator's attention.**
- **A full job report is instantly available.**



### Smart

The EyeC ProofRunner uses a compact, high speed line scan camera to continuously acquire a high resolution image of the entire web. A high performance computer system then identifies all printed items on the web and tracks them through the entire print- or converting run. The same computer also performs an intelligent comparison of each printed item against the customer proof. The advanced pattern analysis of the EyeC ProofRunner is capable of distinguishing between the different types of defects, so every significant deviation will get caught and displayed while permissible fluctuations caused by the printing process itself - like minor registration errors or small squeeze marks around individual letters - can be automatically passed. The intelligent design allows for the inspection of hot- or coldstamping elements.



Examples of flaws

## Reliable

The EyeC ProofRunner finds all typical defects such as: **missing parts of letters, filled in letters, hickeys, smudges, missing ink, spots, color deviations, defects in hot- or cold stamping elements.**

Through the pre-press link to the signed customer proof even content errors resulting from mistakes in the pre-print area can be detected like: **typos, reversed colors in graphical elements, wrong font or font attributes, incorrect character spacing, missing special characters or accents.**

## Flexible

The use of different parameter sets allows the EyeC ProofRunner's sensitivity to be adapted to product or customer specific quality standards.

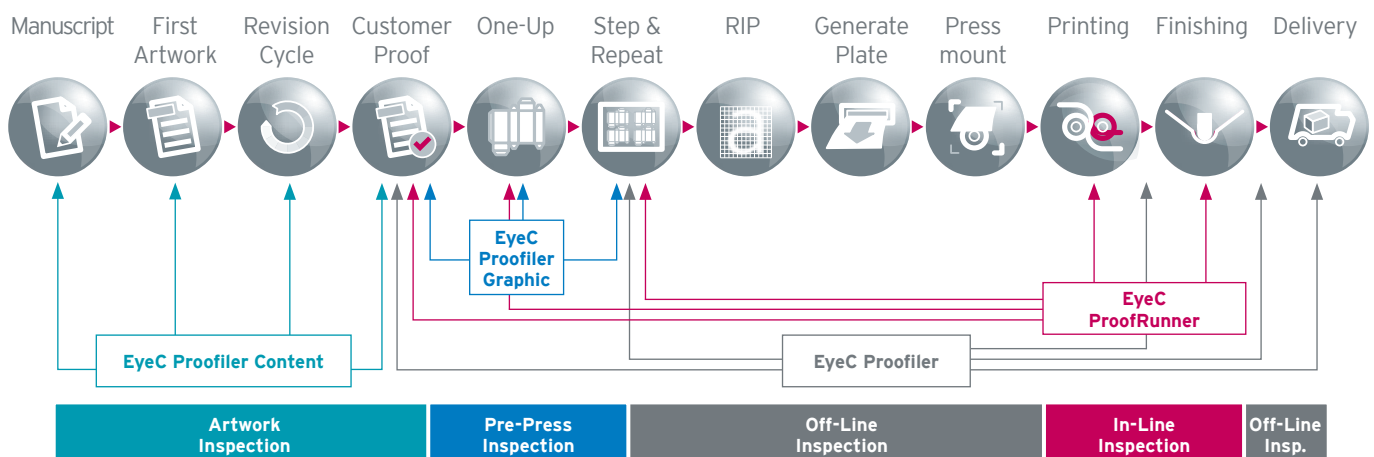
## Comprehensive

The EyeC ProofRunner gives you the advantage that you can be sure to print and deliver exactly what your customer expects.

## Key Features

- ✔ **100% job inspection**  
Ensures quality and keeps customers satisfied.
- ✔ **High and low priority regions**  
Meets quality requirements, while limiting waste.
- ✔ **Hot and cold stamping / reflecting surface inspection**  
Addresses the different market needs.
- ✔ **Predefined parameter sets to select tolerance**  
Adapt the inspection sensitivity to each job with one click.
- ✔ **Running total of good and defective items**  
Prevents underdeliveries.
- ✔ **Comprehensive inspection report**  
Keeps track of inspection results and certifies quality.

## The Design and Printing Process



# Technical specifications\*

| System                      |  | EyeC ProofRunner                    |                                    |   |                                |   |
|-----------------------------|--|-------------------------------------|------------------------------------|---|--------------------------------|---|
|                             | Version  | Carton Retrofit / Carton Pre-Feeder | Carton                             | Label   | Leaflet                        | Flexible Packaging                                  |
| Available Cameras           | Camera   | 4K                                  | 2K, 4K or 8K                       | 2K, 4K or 8K  | 4K                             | 2K, 4K or 8K  |
|                             | Mode   | color                               | grayscale or color                 | grayscale or color                                    | grayscale or color             | grayscale or color                                  |
| Available Inspection Widths | Standard   | 400 mm (15.74")                     | 450 mm (17.71")                    | 450 mm (17.71")                                       | 550 mm (21.65")                | 450 mm (17.71")                                     |
|                             | Optional   | 660 mm (25.98")                     | 330 mm (12.99")<br>550 mm (21.65") | 330 mm (12.99")<br>550 mm (21.65")<br>760 mm (29.92") | 760 mm (29.92")                | 550 mm (21.65")<br>760 mm (29.92")<br>1270 mm (50") |
| Example                     | Inspection Width   | 400 mm (15.74")                     | 450 mm (17.71")                    | 450 mm (17.71")                                       | 550 mm (21.65")                | 1270 mm (50")                                       |
|                             | Camera   | 4K color                            | 4K color                           | 4K color  | 4K grayscale                   | 4K color  |
|                             | Max. Speed   | up to 400 m/min (1,312 ft/min)      | up to 420 m/min (1,377 ft/min)     | up to 420 m/min (1,377 ft/min)                        | up to 560 m/min (1,837 ft/min) | up to 1200 m/min (3,932 ft/min)                     |
|                             | Resolution   | 244 dpi                             | 231 dpi                            | 231 dpi   | 189 dpi                        | 82 dpi  |
| Features & Options          | Check Vs. Customer Proof                                   | standard                            | standard                           | optional  | optional                       | optional  |
|                             | Color Monitoring   | optional                            | optional                           | optional  | optional                       | optional  |
|                             | 1D & 2D Code Reading                                       | optional                            | optional                           | optional  | optional                       | optional  |
|                             | Variable Data Inspection                                   | optional                            | optional                           | optional  | optional                       | optional  |
|                             | Variable Code Tracking                                     | optional                            | optional                           | optional  | optional                       | optional  |
|                             | Automatic Definition of Priority Regions from the PDF File | optional                            | optional                           | optional  | optional                       | optional  |
|                             | Defects Heatmap  | optional                            | optional                           | optional  | optional                       | optional  |
|                             | Health Warning Messages Inspection                         | not available                       | optional                           | not available   | not available                  | not available                                       |

\* All values provided are to our best knowledge at the time this sheet has been created and subject to change without further notice. These technical specifications are based on standard assumptions, please inquire the available speed and resolution of your system with the quotation. The specifications stated in the quotation and Order confirmation are assured product capabilities.

### The EyeC ProofRunner

- is objective and easy to use
- inspects 100% of the web, graphics and text, color and copy
- asserts consistency between all printed objects that are printed simultaneously
- provides content verification, in any language and any alphabet
- gives you 100% mix-up prevention
- and gives 100% assurance that the print is identical to the signed off customer proof!
- is fully validatable

**HEADQUARTERS / GERMANY,  
AUSTRIA, SWITZERLAND**

**EyeC GmbH**

Phone: +49 40 226 3555-0

E-mail: Sales@EyeC.de

www.EyeC.de

**UNITED KINGDOM, IRELAND**

**EyeC UK Limited**

Phone: +44 118 983 3347

E-mail: Info@EyeC-UK.com

www.EyeC-UK.com

**BENELUX, DENMARK**

**EyeC Benelux**

Phone: +31 74 2502 533

E-mail: Info@EyeC-Benelux.com

www.EyeC-Benelux.com

**FRANCE**

**PerFormance Graphique**

Phone: +33 6 303 841 32

E-mail: Fabrice.Hardouin@cegetel.net

www.EyeC.fr

**GREECE**

**Graphic Systems**

Phone: +30 210 9221039

E-mail: Info@GraphicSystems.gr

**ITALY**

**Endeavour s.a.s.**

Phone: +39 055 603447

E-mail: Andrea@Endeavour.it

www.EyeC-Italia.com

**POLAND**

**EyeC Polska**

Phone: +48 512 354 354

E-mail: Marcin.Weksler@EyeCPolska.pl

www.EyeCPolska.pl

**SERBIA, SLOVENIA, CROATIA,  
BOSNIA, MONTENEGRO, KOSOVO,  
MACEDONIA, BULGARIA**

**Printbox**

Phone: +381 63302104

E-mail: Sales@Printbox.rs

**SPAIN**

**Sercoyse, S.L.**

Phone: +34 93 2610486

E-mail: Sercoyse@Sercoyse.com

www.Sercoyse.com

**USA, CANADA**

**EyeC America, LLC**

Phone: +1 330 644 6841

E-mail: Info@EyeC-America.com

www.EyeC-America.com

**BRAZIL**

**MZ Máquinas Ltda.**

Phone: +55 11 2374 1335

E-mail: Marcelo@MZMaquinas.com.br

www.EyeC-Inspection.com

**CHILE**

**Walbaum Representaciones Ltda.**

Phone: +562 2351020

E-mail: NWalbaum@WalbaumChile.cl

www.WalbaumChile.cl

**LATIN AMERICA**

**EyeC America, LLC**

Phone: +1 480 703 9538

E-mail: Lyz@EyeC-America.com

www.EyeC-America.com

**ISRAEL**

**Pro Art Technology Ltd.**

Phone: +972 544 587889

E-mail: Ilan@ProArt.co.il

www.EyeC-Inspection.com

**TURKEY**

**Imaj Otomasyon Sanayi Ticaret Ltd. Sti.**

Phone: +90 212 220 41 16

E-mail: Murat.Mutlu@ImajOtomasyon.com

www.ImajOtomasyon.com

**UNITED ARABIAN EMIRATES**

**Fotedar Engineering Services**

Phone: +97 1509414078

E-mail: Info@FotedarEngineering.com

www.FotedarEngineering.com

**Contact us**



**AUSTRALIA, SOUTH-EAST ASIA**

**GMS Pacific Pty. Ltd.**

Phone: 1300 GMS PACIFIC (467 722)

E-mail: Info@GMSPacific.com

www.GMSPacific.com

**CHINA**

**EyeC China**

Phone: +86 512 83639577

E-mail: Ivan.Huang@EyeC-China.com

www.EyeC-China.com

**INDIA**

**Genius Flexo Machinery Pvt Ltd.**

Phone: +91 22 2660 1291

E-mail: Vijay@GeniusFlexo.com

www.EyeC-Inspection.com

**JAPAN**

**Cross-Link Pacific Inc.**

Phone: +81 3 5919 2120

E-mail: Info@CrossLinkPacific.co.jp

www.CrossLinkPacific.co.jp

**TAIWAN**

**EyeC Taiwan**

Phone: +886 2 2660 2495

E-mail: Ivan.Huang@EyeC-China.com

www.EyeC-China.com